

WINERY WASTEWATER TREATMENT



Our Wastewater Treatment solutions guarantee:

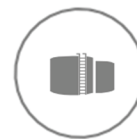
- Sustainable and Cost- Effective Solutions
- Process Efficiency
- Optimized for seasonal variations
- Robust and user - friendly operation
- Reuse and reengineering of existing structures
- Environmental landscape integration
- Possibility of wastewater reuse
- Complying to local and European Regulations



RESEARCH



TECHNOLOGIES



PLANTS

EXPERTS IN INDUSTRIAL WASTEWATER TREATMENT

WINERY WASTEWATER TREATMENT PLANTS



Optimized for Seasonal Variations

Winery wastewater is characterized by variations in pollutants concentration and flow rate during the year. In order to maintain the efficiency throughout the year,

WINEBIOAOP Winery Wastewater Technology adapts automatically to these variations:

- In the harvest, the WWTP activates the Advanced Oxidation Process and the Biological Reactor (SBR) runs in high charge mode at full capacity;
- After the harvest, during the washings and racking processes, the WWTP stops the Advanced Oxidation Process and the Biological Reactor runs in medium charge mode;
- In the period of low wastewater production, the WWTP runs only with Biological Reactor in complete discontinuous mode .



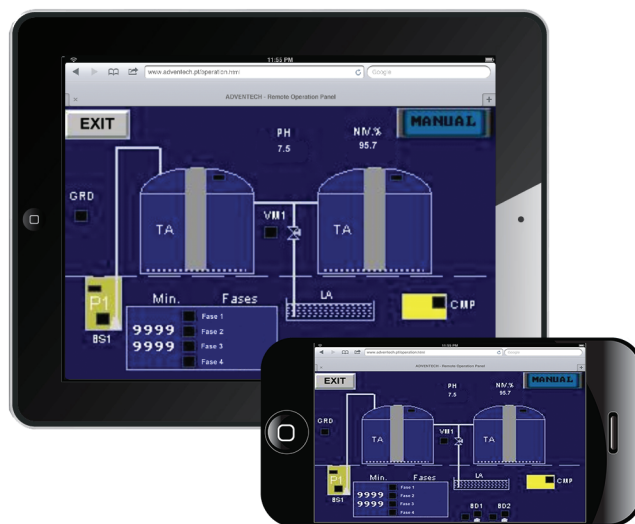
Technologies and Engineering



- Highly qualified and experienced engineering team;
- Field -proven installations at several customer locations;
- Fully-equipped lab development, analysis and process fine-tuning;
- Custom-tailored solutions for specific requirements;
- Reuse and Reengineering of old structures;
- Upgrade of malfunctioning plants;
- Close partnerships with European Universities.

Operations and Control

- Graphical view of the Plants operational status
- User - friendly operation
- Robust user interface
- Automatic alarms and thresholds
- Multiple access levels for users and supervisor
- Powerful logging and reporting features
- Remote diagnostics and operations



Technical Support and Maintenance

- Technical support provided 24/24, through the year;
- A permanent stock of critical spare parts;
- Guaranteed life-long support of the plant.

